

FlightMirage displaying aircraft models.

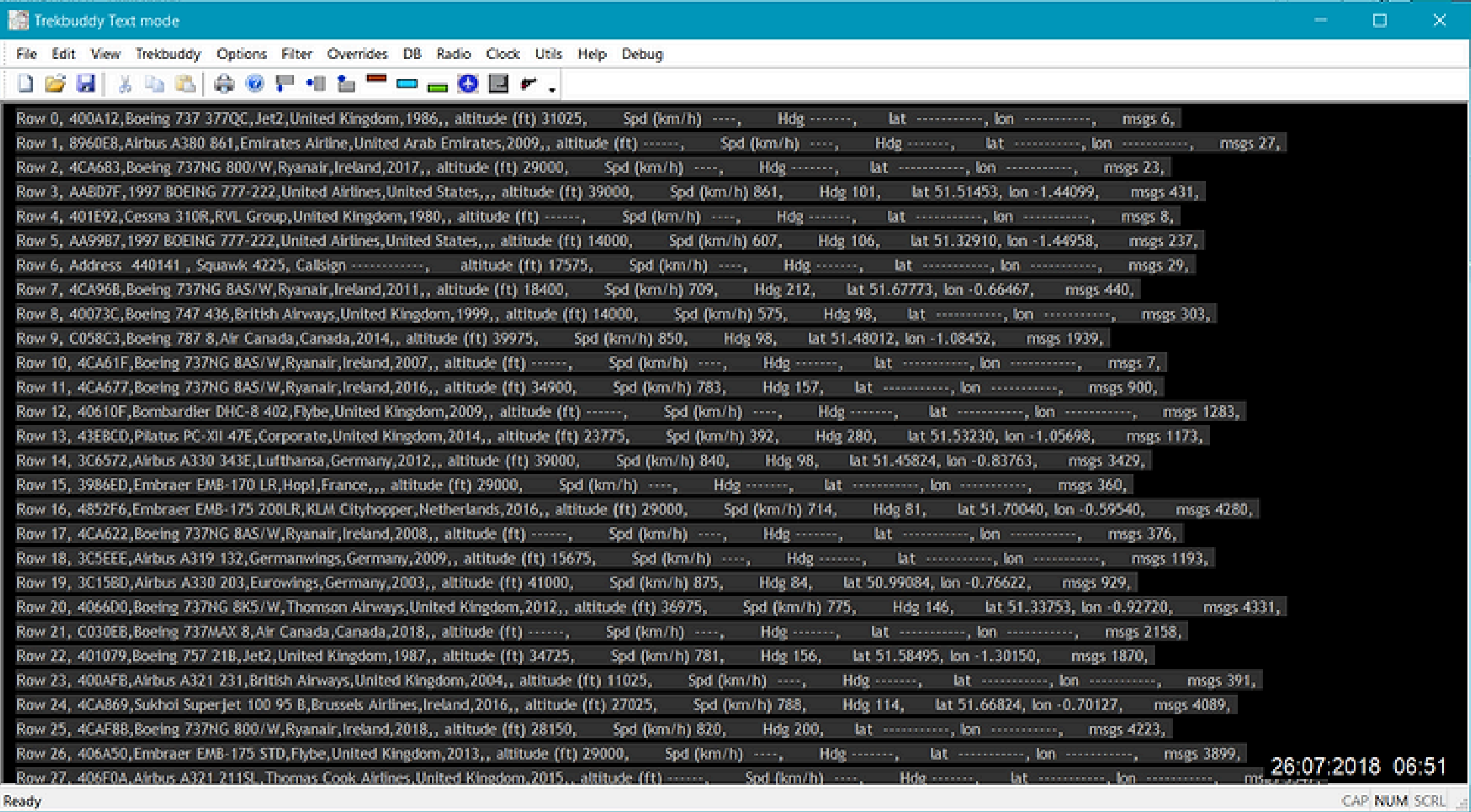
FlightMirage can show aircraft models both on the text display and also on the map display. The aircraft models details are read from the file Importeddata.csv that you can make by using the DB menu.

For more information on creating a Importeddata.csv file see <http://www.stevematt.f9.co.uk/flightmirage/json.html>.

FlightMirage displaying aircraft models.

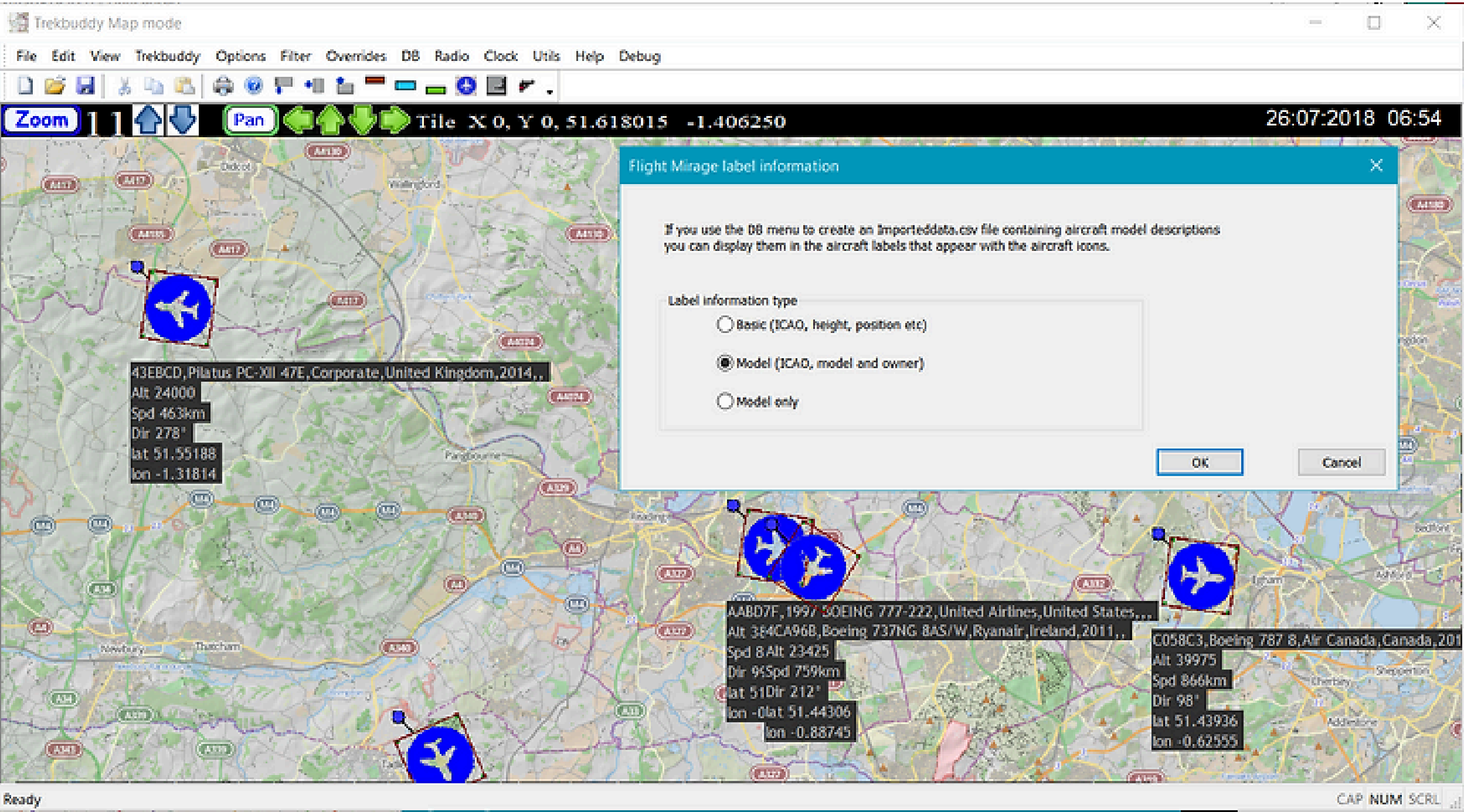
Here's a screengrab of the text display with the aircraft models shown.

To enable aircraft models use the Options menu and Label info. The text display can show Basic info (that which is transmitted by the aircraft radio) or a mix of Model (ICAO, model and owner from the Importeddata.csv file) and some Basic info. It will not show Model only.



Here's a screengrab of the map display.

With the Label information type set to Model or Model only you can see a line for the aircraft model. If there is no entry for the aircraft ICAO in the Importeddata.csv file then the aircraft label reverts back to Basic information.



For the FlightMirage main web page see <http://www.stevematt.f9.co.uk/flightmirage/index.html>.

My home page

<http://www.stevematt.f9.co.uk>

Last updated 25 October 2020