

FlightMirage displaying aircraft models.

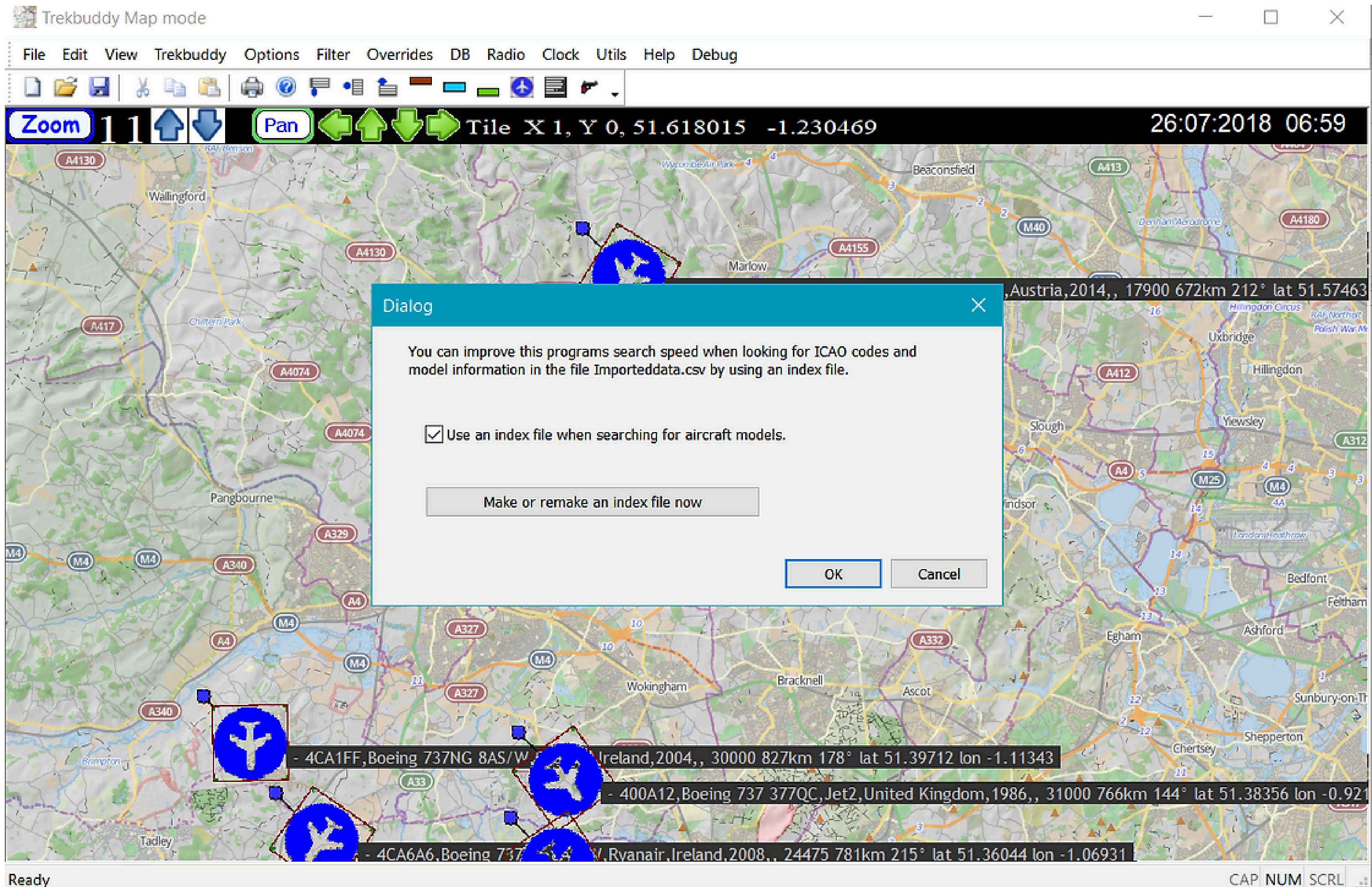
FlightMirage can show aircraft models both on the text display and also on the map display. The aircraft models details are read from the file Importeddata.csv that you can make by using the DB menu.

For more information on creating a Importeddata.csv file see <http://www.stevematt.f9.co.uk/flightmirage/json.html>.

FlightMirage using an index file to speedup the programs search for aircraft models.

To enable aircraft models use the Options menu and Label info. The text display can show Basic info (that which is transmitted by the aircraft radio) or a mix of Model (ICAO, model and owner from the Importeddata.csv file) and some Basic info or Model only.

To create an index file use the DB menu and Index file. Make an index file. This will create a file called Index.dat in the same folder as the Flightmirage program. The file is large. It is 65M in size. Put a tick in the Use an index file box. This will make it very quick for Flightmirage to look up model information in the Importeddata.csv file. If you are short on disk space you can run the Flightmirage program with out the index file, it will still run OK but might pause when it finds a new aircraft and looks for it's model information. If you are still want to use an index file but are short on disk space just delete the Index.dat when you finish using the program. It's quick to make a new one when you next need it. Every time you update your Importeddata.csv file you will need to remake the index file otherwise the models might be wrong and not match the ICAO aircraft codes.



For the FlightMirage main web page see <http://www.stevematt.f9.co.uk/flightmirage/index.html>.

My home page

<http://www.stevematt.f9.co.uk>

Last updated 28 October 2020