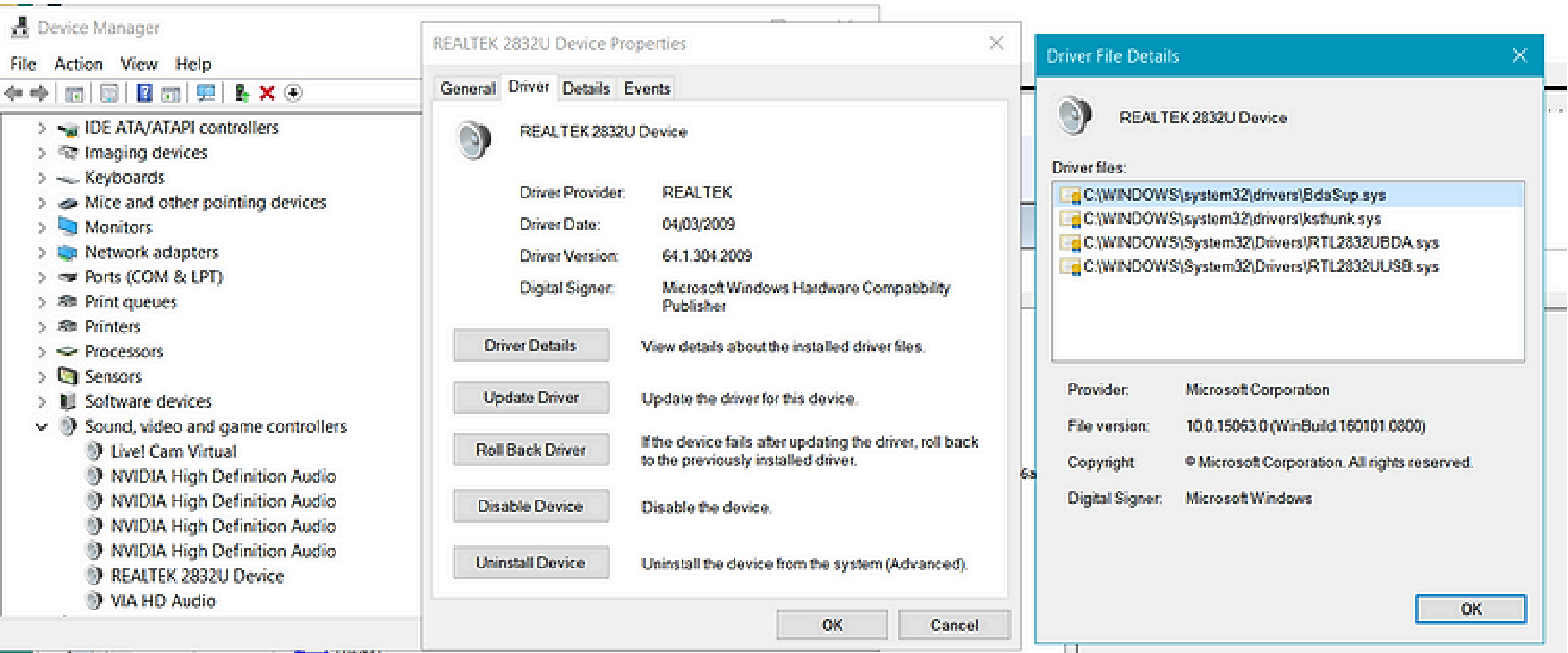


FlightMirage installing the Realtek 2832U device driver in MS Windows 10.

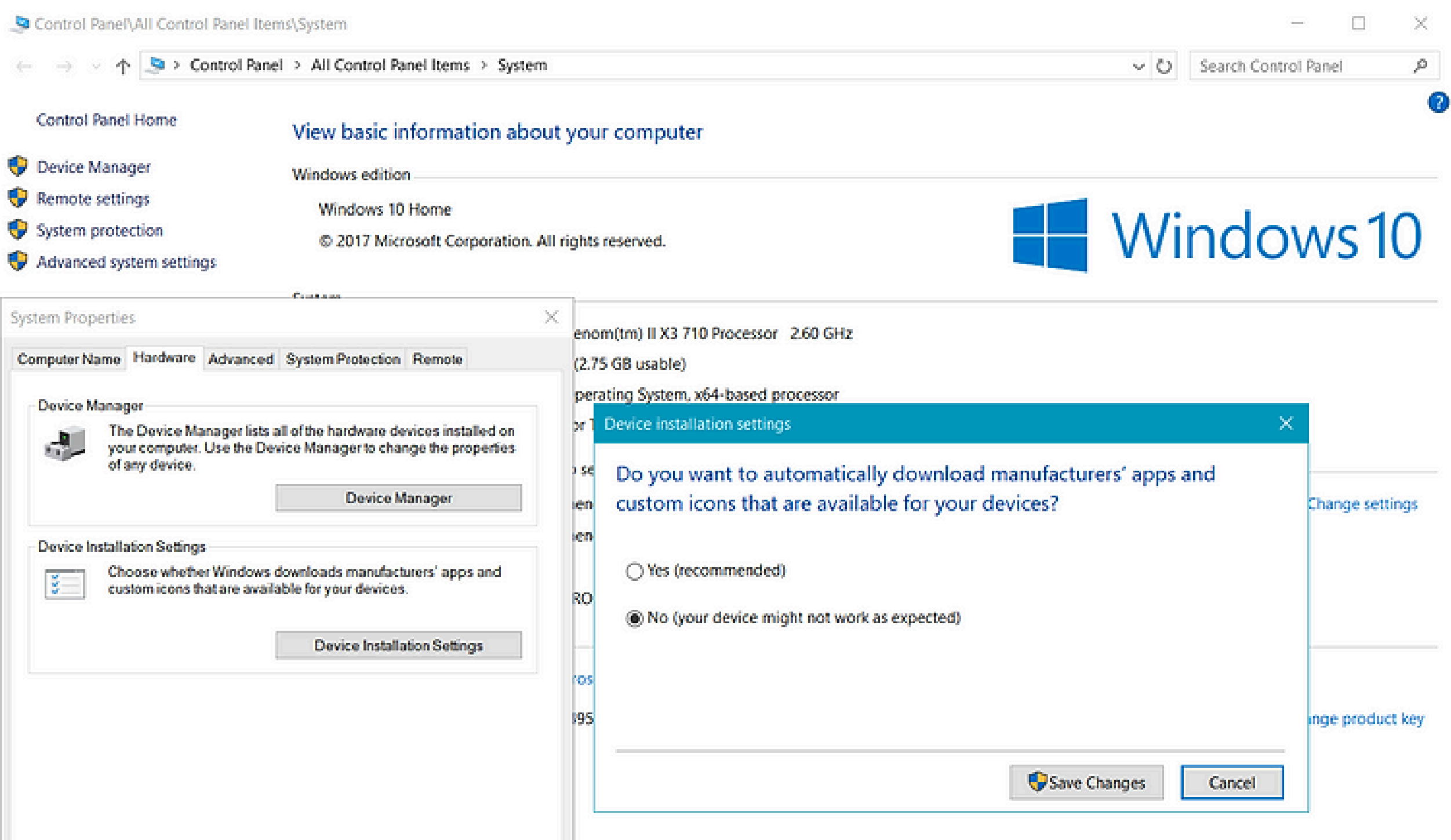
You might need to change your browser zoom using the Ctrl and - or Ctrl and + to get the pictures to fit on your screen.

Since the Creators update for Windows 10 the Realtek TV driver is installed by default. You need to have the WinUSB driver installed for your USB device to use FlightMirage (PMTes2.exe) or Dump1090.

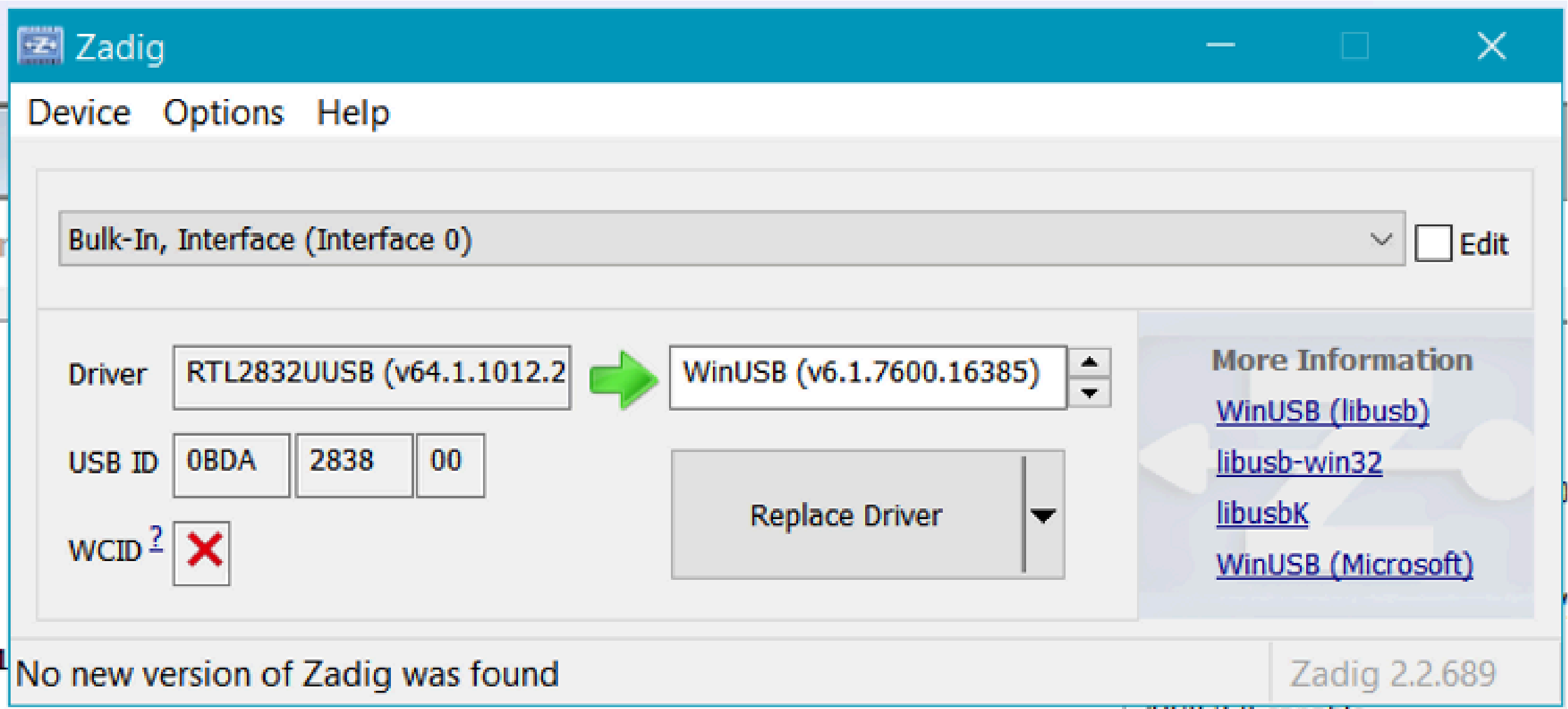
Here is a screengrab of the Realtek TV driver.



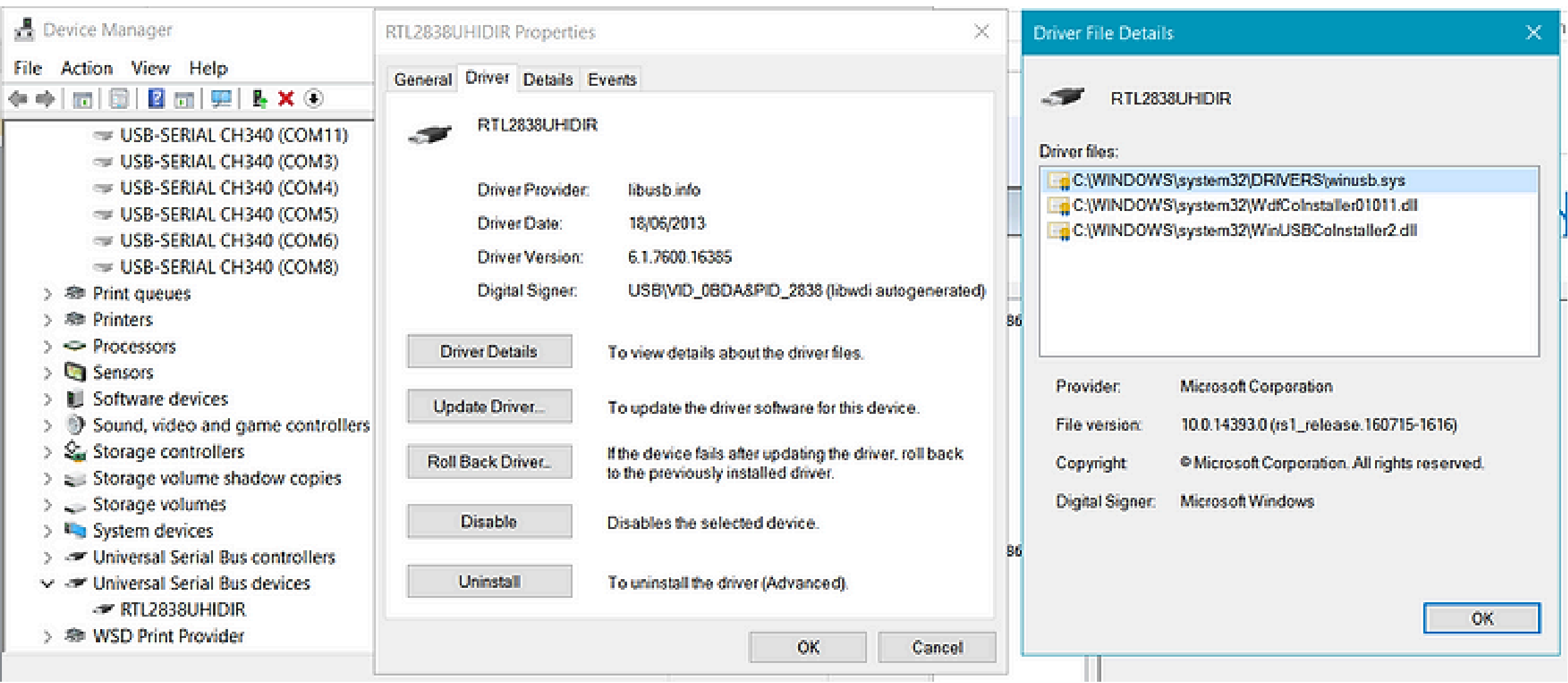
Turn off Automatic download of manufacturer's apps. See the screengrab below.



Download Zadig from the web and install one of the WinUSB drivers. After using Zadig you must restart Windows 10 to activate the device driver. When you use Zadig make sure the USB device USB ID matches the PID and VID of your USB stick. Be careful not to select the wrong USB device such as your USB mouse or keyboard. That will stop them working and make it tricky to revert back to the correct drivers. For the REALTEK 2832U Device it is USB\VID_0BDA&&PID_2838&&REV_0100 . See the screengrab below.



Here is a screengrab of the libusb winusb driver.



If you want to switch back to the Realtek TV driver just switch on Automatic download of manufacturer's apps.

Back to the previous web page

<http://www.stevematt.f9.co.uk/flightmirage/index.html>

Last updated 16 April 2017